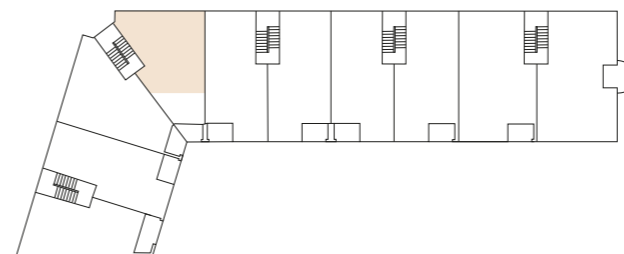


# 1,5-Zimmer-Wohnung

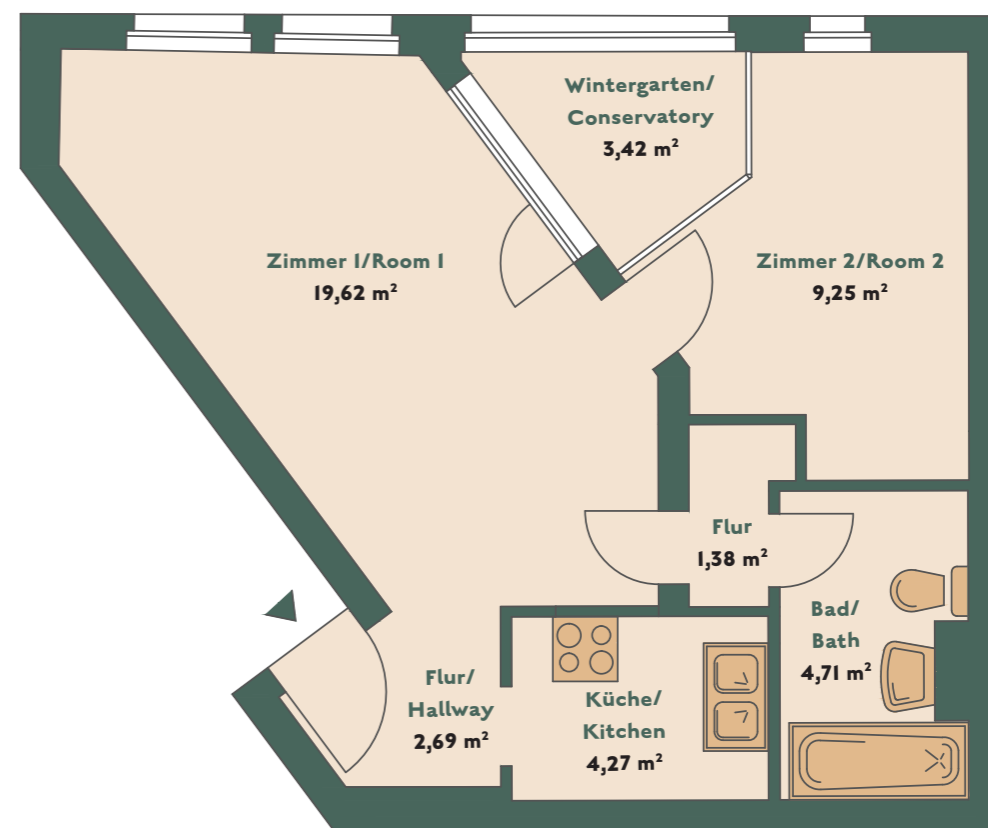
I-BEDROOM-APARTMENT

2. OG LINKS / SECOND FLOOR LEFT, CA. 43,63 m<sup>2</sup>



## WE 29

DONAUSTRASSE 69  
12043 BERLIN



Die Balkone/Terrassen/Loggias werden zu 50 % in die Wohnfläche eingerechnet.  
Balconies/terraces/loggias are calculated at 50%.