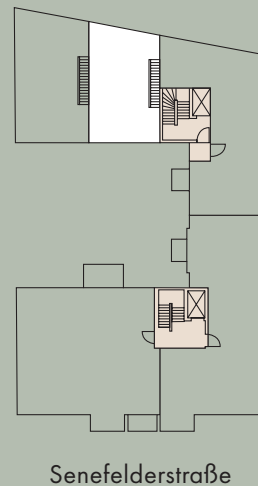


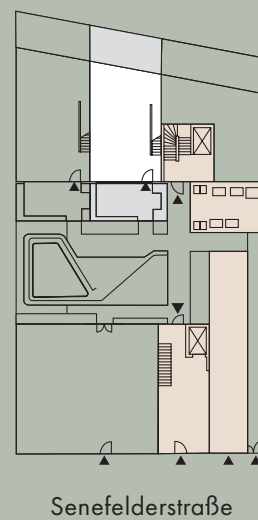
**TOWN RESIDENCE**  
**WOHNUNG 02**  
**EG + 1. OG + 2. OG**  
**4,5 ZIMMER**  
**WOHNFLÄCHE 166,89 m<sup>2</sup>**

EG Wohnküche	kitchen living room	56,04 m <sup>2</sup>
EG WC	WC	2,32 m <sup>2</sup>
EG HWR	laundry   storage	1,88 m <sup>2</sup>
EG Privatgarten*	privat garden*	20,03 m <sup>2</sup>
1. OG Zimmer 1	bedroom 1	17,51 m <sup>2</sup>
1. OG Bad	bathroom	6,50 m <sup>2</sup>
1. OG Galerie	gallery	10,92 m <sup>2</sup>
1. OG Flur	hallway	13,99 m <sup>2</sup>
2. OG Zimmer 2	bedroom 2	11,71 m <sup>2</sup>
2. OG Zimmer 3	bedroom 3	15,29 m <sup>2</sup>
2. OG Bad	bathroom	5,81 m <sup>2</sup>
2. OG AR	storage	7,95 m <sup>2</sup>
2. OG Flur	hallway	11,20 m <sup>2</sup>
2. OG Terrasse*	terrace*	2,98 m <sup>2</sup>
<b>Gesamtwohnfläche</b>	<b>Total Area</b>	<b>166,89 m<sup>2</sup></b>

**1. + 2. OG**



**EG**



\*Die Balkone und Loggias sind zu 50 % und alle Terrassen sowie Privatgärten sind zu 25 % in die Wohnfläche eingerechnet.

\*The balconies and loggias are factored into the floor area at a ratio of 50% and the terraces and privat gardens at a ratio of 25 %.

Town Residence

**APT. 02**

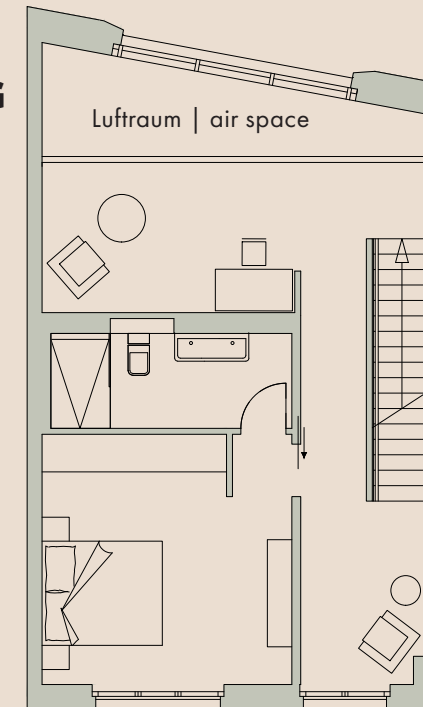
**166,89 m<sup>2</sup>**

**3,5-bedroom Apartment**

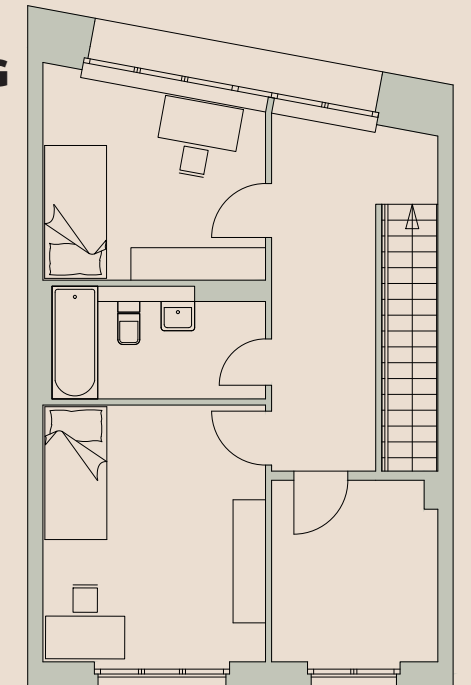
**Senefelderstraße 21 | Ground floor + 1st floor + 2nd floor**



**1. OG**



**2. OG**



**EG**

