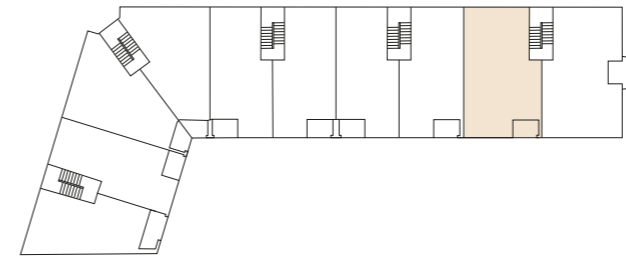


# 4-Zimmer-Wohnung

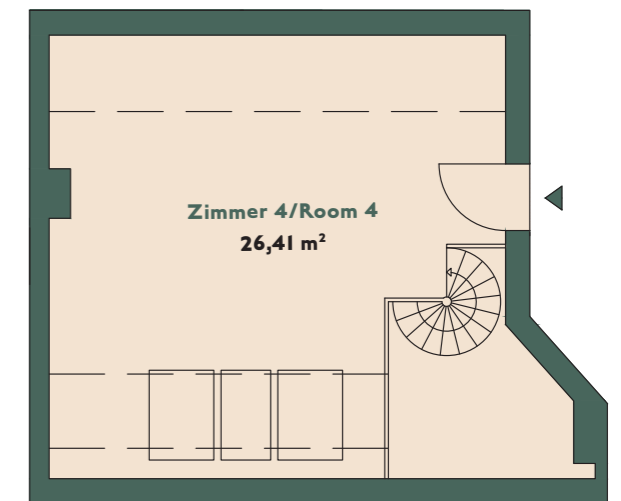
3-BEDROOM-APARTMENT

3. OG RECHTS / THIRD FLOOR RIGHT, CA. 91,86 m<sup>2</sup>



## WE 08

DONAUSTRASSE 70B  
12043 BERLIN



Die Balkone/Terrassen/Loggias werden zu 50 % in die Wohnfläche eingerechnet.  
Balconies/terraces/loggias are calculated at 50%.