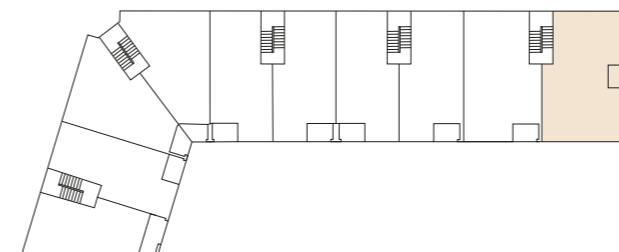


# 3-Zimmer-Wohnung

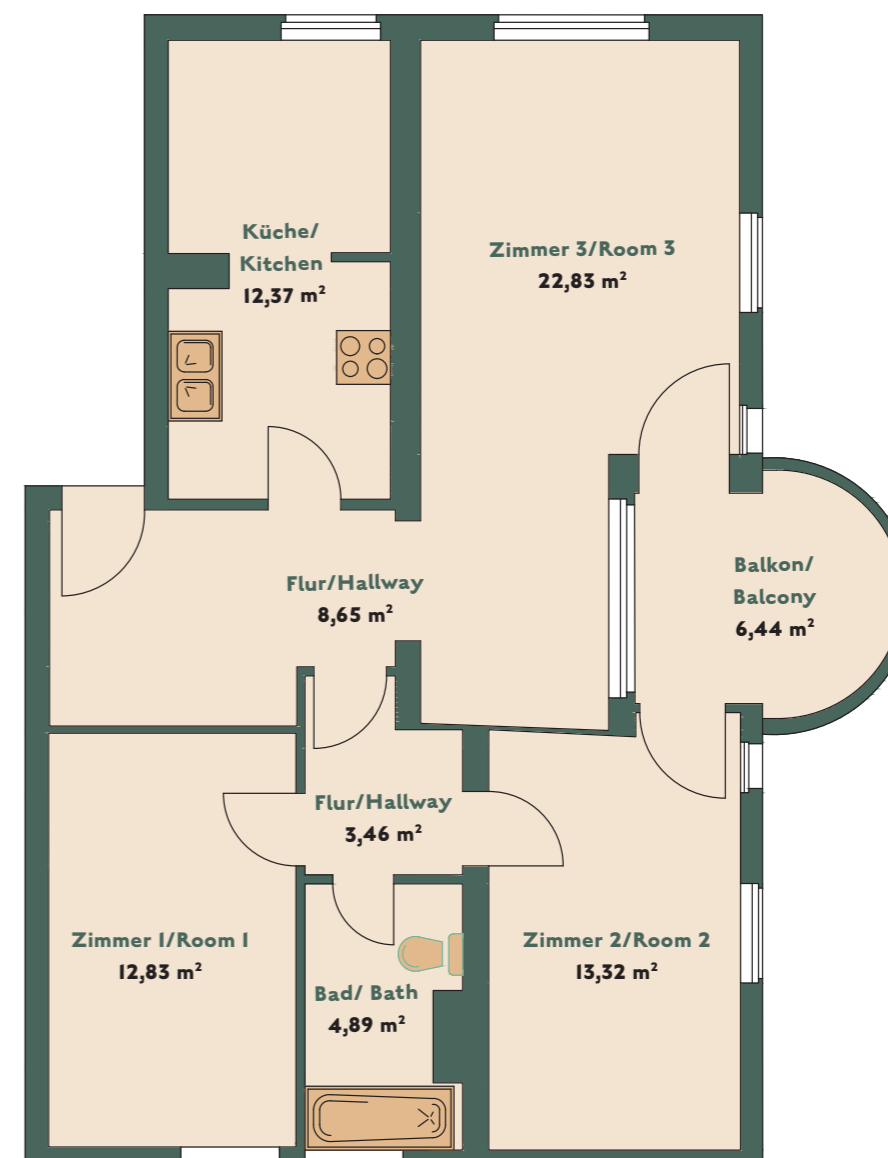
2-BEDROOM-APARTMENT

2. OG LINKS / SECOND FLOOR LEFT, CA. 81,57 m<sup>2</sup>



## WE 05

DONAUSTRASSE 70B  
12043 BERLIN



Die Balkone/Terrassen/Loggias werden zu 50 % in die Wohnfläche eingerechnet.  
Balconies/terraces/loggias are calculated at 50%.