

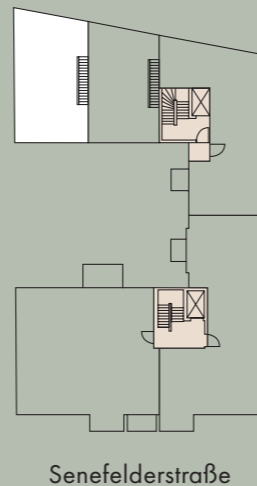
TOWN RESIDENCE
WOHNUNG 03
EG + 1. OG + 2. OG
4,5 ZIMMER
WOHNFLÄCHE 191,90 m²

EG Wohnküche	kitchen living room	64,60 m ²
EG WC	WC	2,32 m ²
EG HWR	laundry storage	1,88 m ²
EG Privatgarten*	privat garden*	21,37 m ²
1. OG Zimmer 1	bedroom 1	18,66 m ²
1. OG Bad	bathroom	6,40 m ²
1. OG Galerie	gallery	15,42 m ²
1. OG Flur	hallway	16,54 m ²
2. OG Zimmer 2	bedroom 2	15,58 m ²
2. OG Zimmer 3	bedroom 3	16,29 m ²
2. OG Bad	bathroom	5,67 m ²
2. OG AR	storage	8,57 m ²
2. OG Flur	hallway	13,89 m ²
2. OG Terrasse*	terrace*	2,98 m ²
Gesamtwohnfläche	Total Area	191,90 m²

*Die Balkone und Loggias sind zu 50 % und alle Terrassen sowie Privatgärten sind zu 25 % in die Wohnfläche eingerechnet.

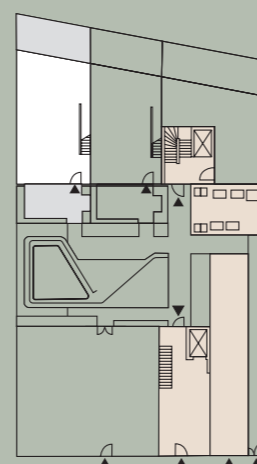
*The balconies and loggias are factored into the floor area at a ratio of 50% and the terraces and privat gardens at a ratio of 25 %.

1. + 2. OG



Senefelderstraße

EG



Senefelderstraße

Town Residence

APT. 03

191,90 m²

3,5-bedroom Apartment

Senefelderstraße 21 | Ground floor + 1st floor + 2nd floor

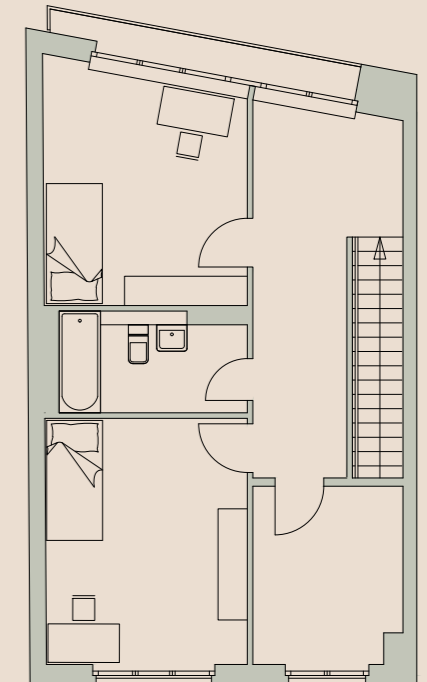


1. OG



Luftraum | air space

2. OG



EG

