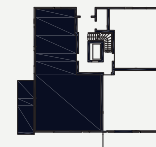
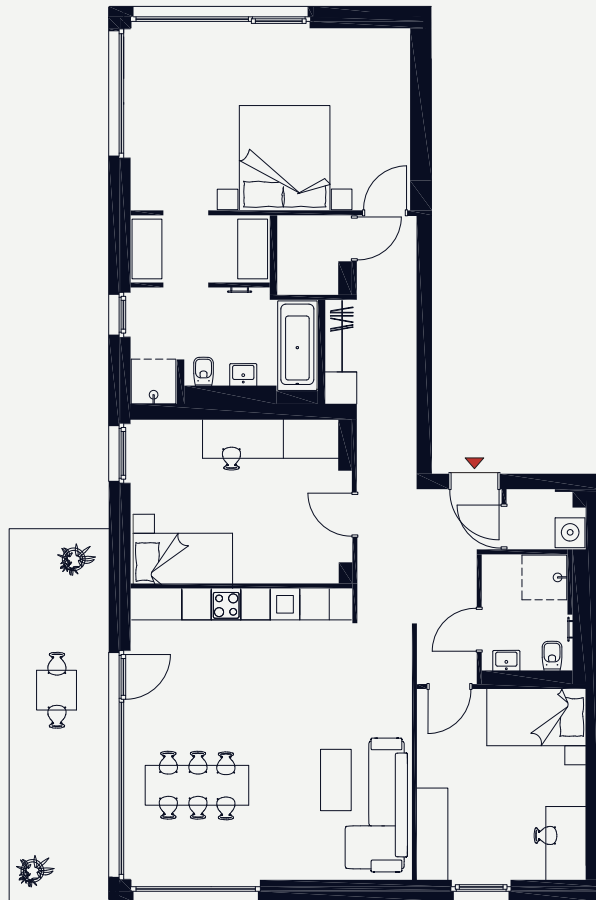




AM GENERALSHOF
KÖPENICK



HAUS 3 | WE 30 (H3.0.3) ERDGESCHOSS

HOUSE 3 | APT. 30 (H3.0.3) GROUND FLOOR

| | |
|-------------------------|-----------------------|
| Zimmer Rooms | 4 |
| Gesamtfläche Total Area | 126,34 m ² |

| | |
|--|----------------------|
| Wohnen Kochen Essen Living Cooking Dining | 33,26 m ² |
| Schlafen Bedroom | 21,34 m ² |
| Ankleide Closet | 3,78 m ² |
| Kinderzimmer Children's room | 13,12 m ² |
| Kinderzimmer Children's room | 14,36 m ² |
| Bad Bathroom | 7,64 m ² |
| Gästebad Guest bathroom | 4,64 m ² |
| Flur Hallway | 16,50 m ² |
| HWR Utility room | 1,81 m ² |
| Abstellraum Store room | 2,21 m ² |
| Terrasse Terrace | 15,36 m ² |

Die Terrasse ist zu 50% (7,68 m²) in die Wohnfläche eingerechnet.

The terrace area is factored into the floor area at a ratio of 50% (7.68 sqm).

Diese Wohnung wird barrierefrei ausgeführt.
This apartment will be realised barrier-free.

LAGE POSITION

