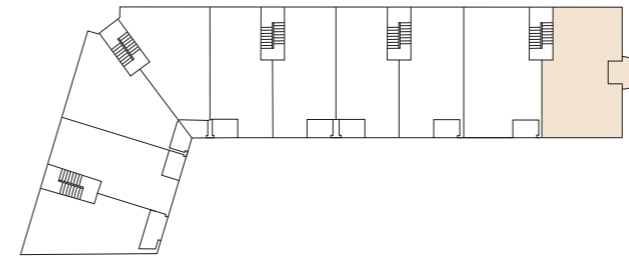


3-Zimmer-Wohnung

2-BEDROOM-APARTMENT

3. OG LINKS / THIRD FLOOR LEFT, CA. 90,56 m²



WE 07

DONAUSTRASSE 70B
12043 BERLIN



Die Balkone/Terrassen/Loggias werden zu 50 % in die Wohnfläche eingerechnet.
Balconies/terraces/loggias are calculated at 50%.